



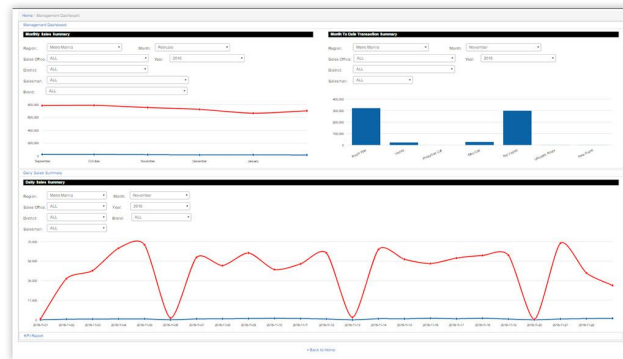
# NATIONAL OPERATIONAL CENTER (NOC)

## Gain wider visibility of your sales, sales team and sales offices.

A web based application that offers **real time monitoring** of field assets simultaneously, utilizing HERE maps. This platform **locates sales offices, sales men, and customers, plans a route list, access monthly sales, create sales orders, and monitor KPI.**

### Features.

**Operational Dashboard.** This is a user interface that shows the Monthly Sales Summary, Transaction Summary, Daily Sales Summary and KPI Report.

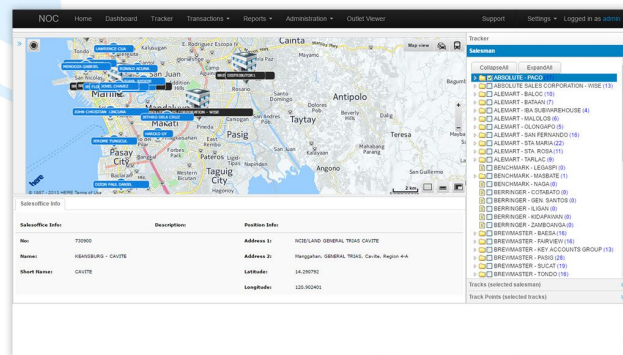


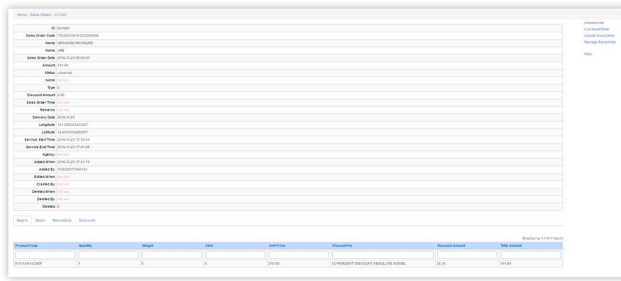
Sales Office Details		Salesmen		Options	
<b>BOOKING</b>					
JETHRO DELA CRUZ 0/3/41/0	TEMPORARY UNAVAILABLE (DISSOLVED) 0/0/0/0	RONALD ACUNA 0/1/70/0	SONNY NAVA 0/0/0/0		
JEFFERSON CIRIOG 0/4/450/0	LAWRENCE CIA 0/0/0/0	HAROLD DY 0/0/0/0	MENDOZA GABRIEL 0/0/0/0		
JOVEL CHAVEZ 0/2/155/0	FLORES BENEIL RAM 0/3/77/0	JOHN CHRISTIAN LINGCUNA 0/2/2/0	MOROSILLO DERRICAL 0/4/84/0		
JENNIE LYN EWANGELISTA 0/0/0/0	RAYA, REDDIE 0/9/22/0				
<b>CONVENTIONAL</b>					
DICON PAUL DANIEL 0/6/158/0	JEROME LINGCUI 0/0/0/0	MARK SAJUELA 0/3/92/0			

### Sales Office/Salesman Day

**Monitoring.** This enables the user to view overall sales filtered by Sales Office or by Salesman. This module can also access the Salesman's routed locations and remaining route list.

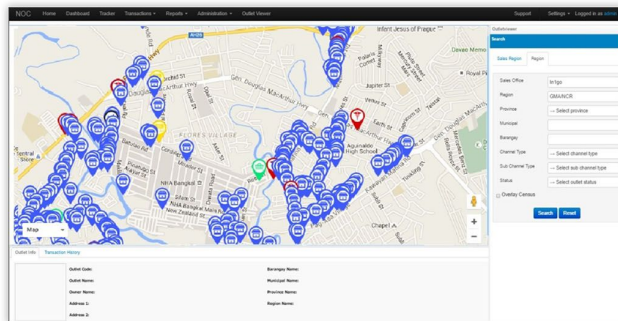
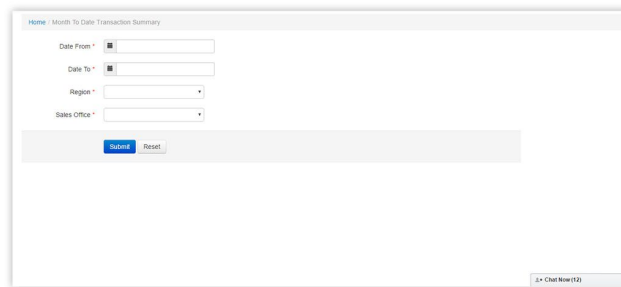
**Asset Tracking.** This enables the user to track shipments and sales men in real-time.





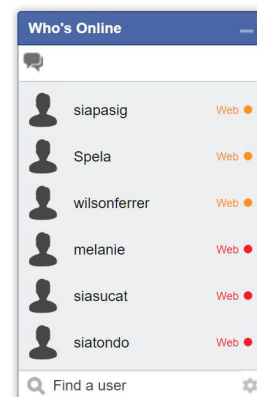
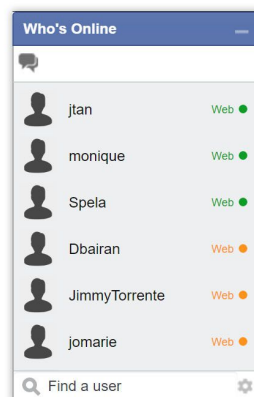
**Transactions.** This enables the user to view sales orders and sales invoices. This feature also allows the user to import transactions.

**Reports.** This enables the user to view and manage reports on Transaction Summary, Daily Route Results, Trip Survey, Settlement Reports, Salesman Monitoring etc.



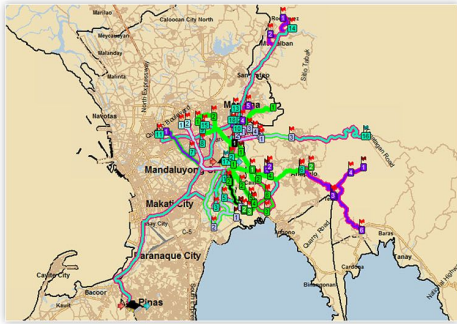
**Outlet Viewer.** This enables the user to view all outlets plotted on the map, including the Outlet Name, Owner Name, Address, Barangay Name, Municipal Name, Province Name, and Region Name.

**Collaboration Platform.** This module enables the user to upload documents, input Notes/Remarks and call/message other users using 1go Chat.



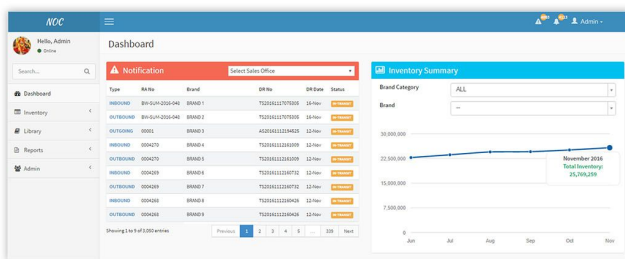
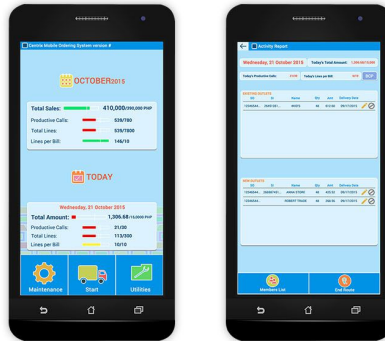
## System Integration.

The following modules are powered by In1go that can be integrated to NOC, created to complete the solution thus allow users to manage their Sales and Supply Chain operation faster and more efficiently.



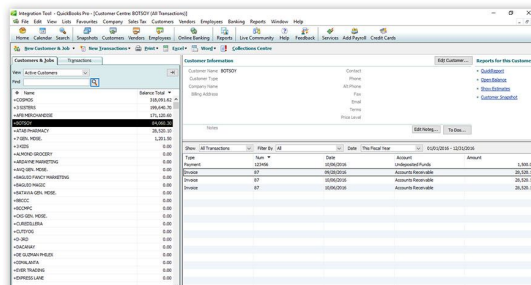
Omnitracs. Territorial Planning.

## CentrixMobileOS/CMOS. Ordering system.



**Warehouse Management System (WMS).** Online inventory system that tracks records, inventory level and item deliveries. Its special features include email notifications, withdrawal requisition, return requisition and online catalogs.

## 3rd Party Applications. SAP/Quickbooks.



## Benefits.



Easy to use.



A single system to manage and maintain versus having multiple platforms or applications.



Increased operational visibility.



Higher productivity and process efficiency.



Cost savings and increased profit.



KPI: Manage. Measure. Report.

**IN1GO TECHNOLOGIES INC.**

Las Pinas Cargo Complex J. Aguilar avenue, Talon Uno Las Pinas City, 1747

+632 511-8681    inquire@in1go.com.ph

**IN1GO**  
www.in1gotech.com