

THE POWER OF



In this day and age of fast paced and diverse technologies, the need for a consolidated, single-view and point of management become more imminent.

As competition gets tighter and customer service become more demanding, organizations are now looking at business process improvements and operational efficiency to address these challenges.

1Go Logistics provides the newest, most comprehensive Supply Chain (SC) resources to save on time, cost and maximize profits as well.

Full Control.

Gain absolute visibility and control of the entire logistics processes and activities. Manage all your clients and all your 3rd party logistics providers (3PL's) in one system.

Manufacturing companies can leverage on a centralized approach in monitoring and reaching out to multiple 3PL providers.

Haulers are able to track their assets across multiple clients and preferred systems under one system.

The Solution.

Drivers are equipped with a dispatch system installed in handheld devices where they log every activity of the delivery process. All these information are made available and can be accessed by the logistics manager through a collaborative portal to oversee and administer.



Value Propositions.



A single system to manage and maintain versus having multiple (tracking) platforms or applications.



Visibility of all your (SC) assets.



Higher productivity and process efficiency.



Cost savings and increased profit.

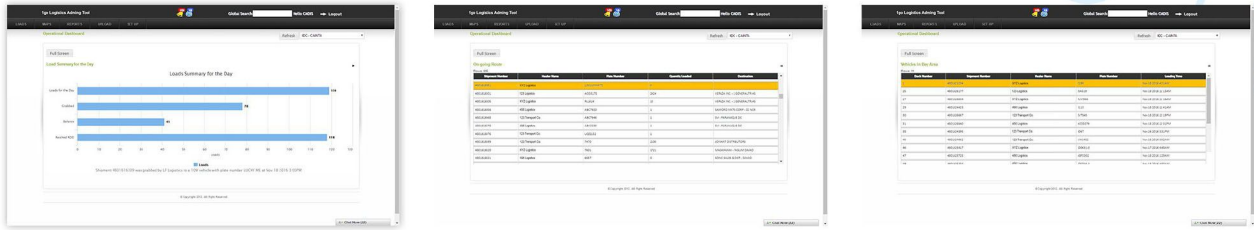


KPI: Manage. Measure. Report.

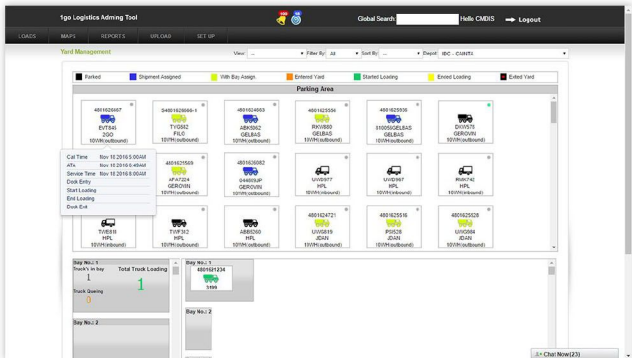
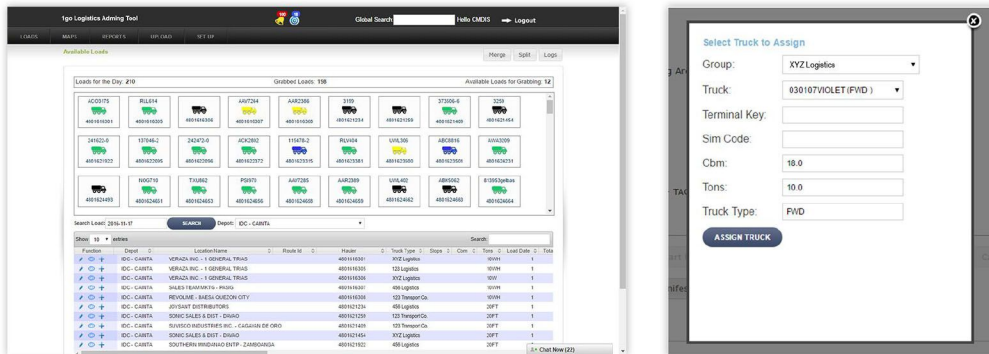


System Features.

Operational Dashboard. This module consists of the loads summary for the day (Loads for the Day, Grabbed, Balance, Resched RDD), list of trucks on route, and vehicles in bay area (filtered by: Shipment Number, Hauler Name, Plate Number, Quantity Loaded, Destination).

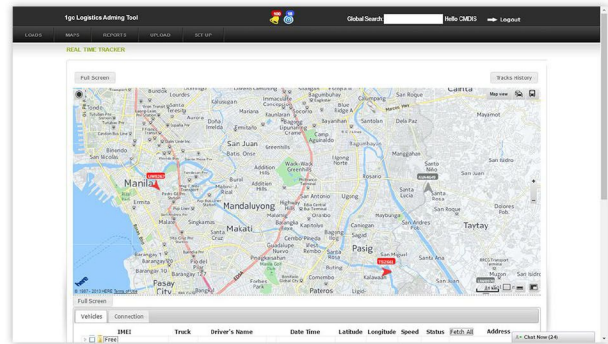
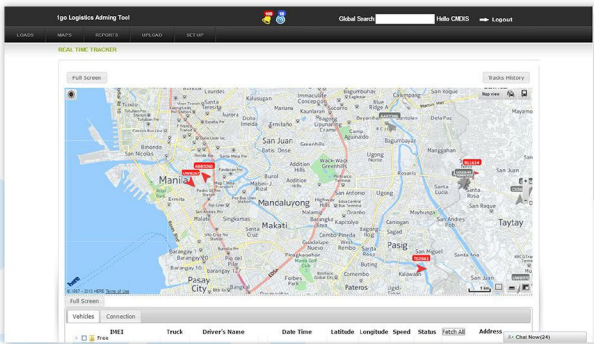


Loadboard. This module enables the user to view and manage all available shipments, shipment assignments and shipment status (Loading/En Route/Delivered). It also has the ability to assign a truck to a specific vehicle assignment.

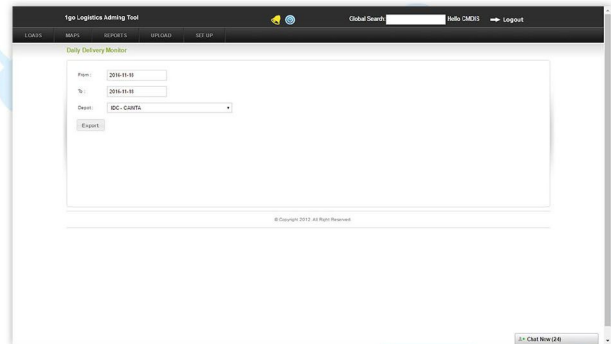
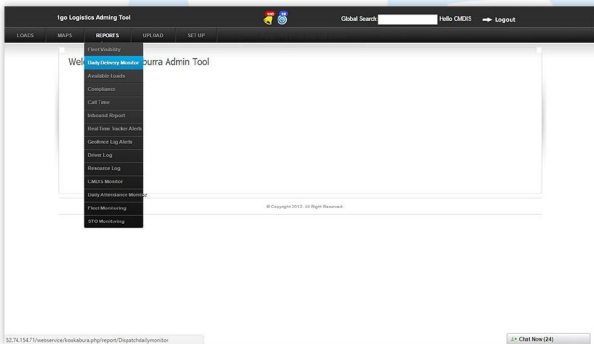


Yard Management. This module allows the user to view the truck's status in and out of the warehouse. (Parked, Shipment Assigned, With Bay Assignment, Entered Yard, Started Loading, Ended Loading, Excited Yard).

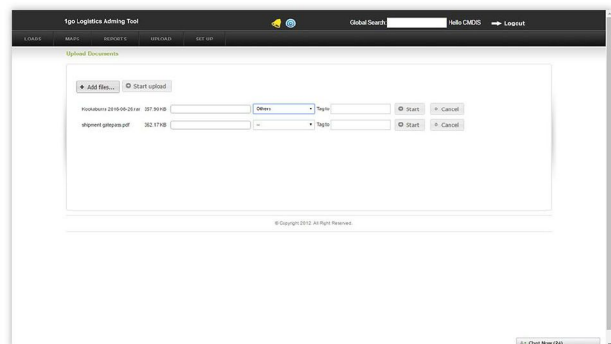
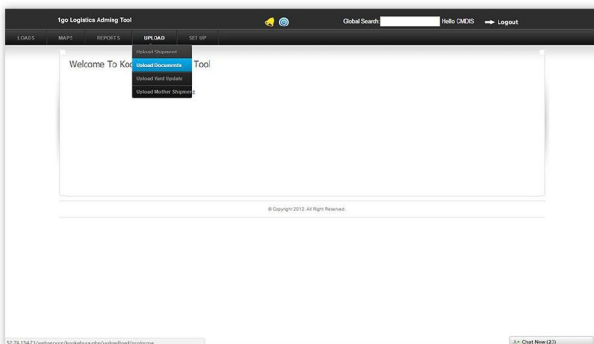
Fleet View/Maps. This module enables the user to view the vehicles historical tracks and locate your vehicle in real-time using the Real-time Tracker.



Reports. This module consists of reports on Fleet Visibility (Truck Availability), Daily Delivery Monitoring (Shipment and Delivery Status), Available Loads (Shipments on Kookabura on Queue to be Delivered), Grabbing Compliance (For Hauler's Shipment Grabbing Compliance), Call Time Compliance (For Hauler's Call Time Compliance), Driver's Log (Driver's Activity), and Resource Log (Resource Activity).



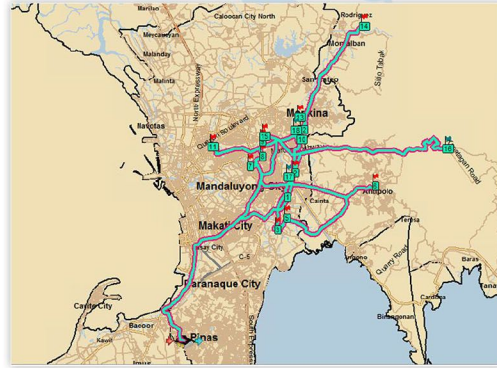
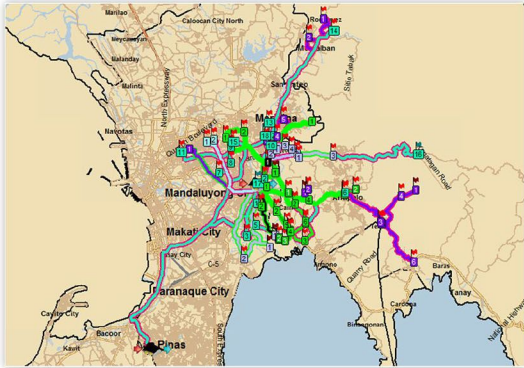
Collaboration Platform. This module enables the user to upload documents (e.g. Proforma Bill of Lading, Call Time Slips), input Notes/Remarks and communicate from Principal to Hauler and Hauler to Principal or Driver (Vice Versa) using 1go Chat.



System Integration.

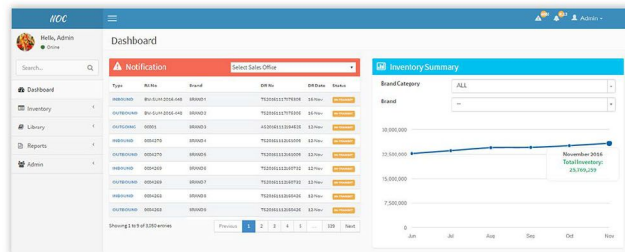
The following applications can be integrated into 1go Logistics, enabling users to manage their Supply Chain operations faster and in a more efficient manner:

Omnitracs. Desktop based application for Route Planning and Route Scheduling.



CentrixMobile Delivery Information System (CMDIS). A mobile application that provides real time fleet connectivity. Allows users to input all delivery activities (Driver, Shipment) and enables them to capture electronic signatures.

Warehouse Management System (WMS). Online inventory system that tracks records, inventory level and item deliveries. Its special features include email notifications, withdrawal requisition, return requisition and online catalogs.



IN1GO TECHNOLOGIES INC.

Las Pinas Cargo Complex J. Aguilar avenue, Talon Uno Las Pinas City, 1747

+632 511-8681 inquire@in1go.com.ph

